



SAFETY SEAL



+ PLUS[®] + THE LIQUID PATCH[®] TIRE REPAIR SYSTEM

A Revolutionary New Concept

Two State of the Art Repair Components

1. LIQUID PATCH[®]

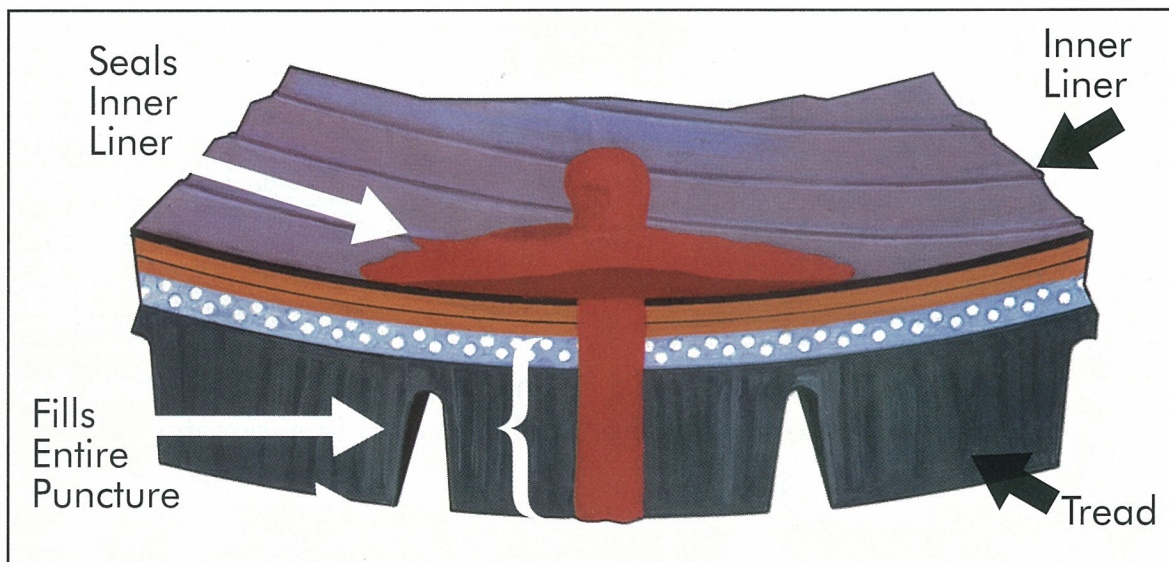
Creates permanent flexible patch on inner liner.

2. SAFETY SEAL[®] REPAIR

Seals entire injury from tread to inner liner.

CREATES

THE PERFECT REPAIR



1. Dismount tire for internal inspection
2. Fill entire injury tread to inner liner
3. Seal puncture at inner liner

NO BUFFING — No damage to the thin inner liner
SAVES TIRES

SUPERIOR REPAIR —Permanent, Simple, Versatile,
(repairs angled injuries)

ECONOMICAL —Reduces Labor & Inventory,
Saves Time and Money

MANUFACTURED BY

NORTH SHORE LABORATORIES CORP.

PEABODY, MA 01960 USA

1-800-888-9021 • FAX 1-978-532-3509 • www.safetyseal.com

An Industry Leader For Over 40 Years



SAFETY SEAL + PLUS[®] + 60,000 MILE TEST



Test Type: 1200 Endurance Test* 60,000mi/100,000km/1200hr

Test Tire: Michelin XGT-V4 205/60R 15
Two 1/4 punctures in tread

Results: After 60,000 miles, **No Air Loss- No Tire Failure.**
Inspection of repairs at inner liner shows repairs intact
and perfectly adhering to inner liner.

*Test conducted by an independent testing laboratory
Complete test results available on request.



Start Up Kit contains 60 Seals, Liquid Patch[®] Prep & Primer[®], Insertion Tool*,
Probing Tool, Special Lube. Components also available separately.

ITEM	Stock#	Pkg/cs.	Weight lbs. — kgs.
Complete Kit Auto	LPKA	6	35 - 16
Complete Kit Truck	LPKT	6	35 - 16
Repairs/Filler Auto (60)	LPRA	54	23 - 11
Repairs/Filler Truck (30)	LPRT	36	18 - 8
Liquid Patch 16 oz.	LPC	12	15 - 7
Prep & Primer qt.	LPIP	12	25 - 12
Lube	SSL	147	22 - 10
Side Open Tool	LPSOT	sold individually	
Split Eye Tool	SSTA	"	
Probe Tool Auto	SSPS	"	

***kits available with choice of insertion tool**

DISTRIBUTED BY: